

MASTER

POWER-BI

IN 15-DAYS



Your BI-zarrely Powerful Guide

Disclaimer

This 15-day roadmap is just the beginning, and you can expand your knowledge by working on diverse projects and exploring advanced features as you progress.

INDEX

Below is a roadmap with stages and practice questions for each stage to help you get started:

Stage: 1	Introduction to Power BI	1
Stage: 2	Data Loading	2
Stage: 3	Data Modeling	3
Stage: 4	Data Visualization	4
Stage: 5	Advanced Topics	5
Stage: 6	Data Transformation	6
Stage: 7	Real-World Projects	7
Stage: 8	Revision	8



Stage 1:

Basics

Day 1 | Introduction to Power BI

- Understand what Power BI is and its key components.
- Install Power BI Desktop.
- Explore the Power BI interface.

Day 2 | Practice Questions

1. What are the three main components of Power BI?
2. How do you create a new report in Power BI Desktop?
3. Explore the Power BI Desktop interface and locate the different panes and tools.



Stage 2:

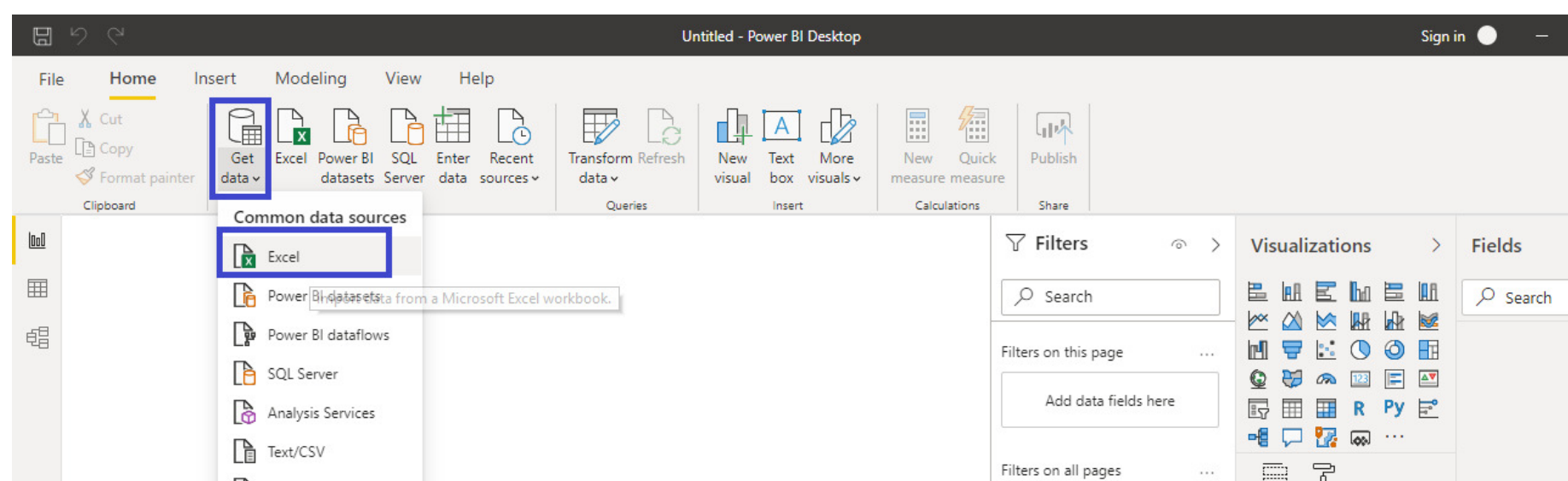
Data Loading

Day 3 | Data Sources and Transformation

- Learn to connect to various data sources (Excel, databases, web, etc.).
- Load data into Power BI.
- Understand data transformation and cleaning techniques.

Day 4 | Practice Questions

1. Connect Power BI to a sample Excel file and load data.
2. How can you filter and clean data in Power Query Editor?
3. Explain the importance of data profiling.



Stage 3:

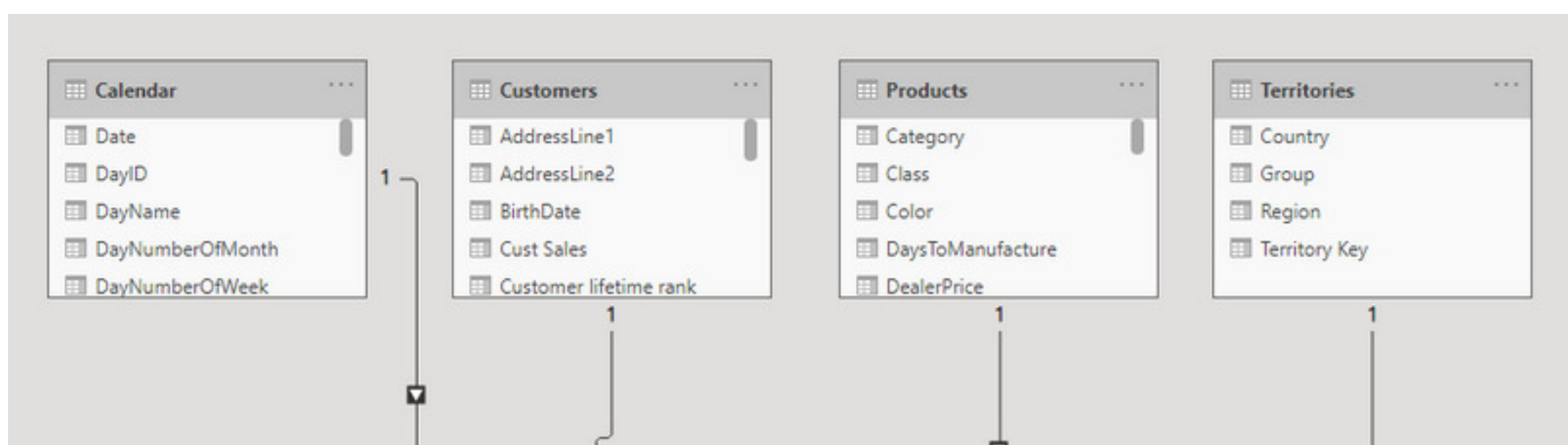
Data Modeling

Day 5 | Data Modeling and Relationships

- Learn about data modeling concepts.
- Create relationships between tables.
- Define measures and calculated columns.

Day 6 | Practice Questions

1. Create a relationship between two tables in Power BI.
2. What's the difference between a measure and a calculated column?
3. Write a DAX expression to calculate total sales.



Stage 4:

Data Visualization

Day 7 | Visualization

- Explore various visualization types (charts, tables, maps, etc.).
- Create interactive reports and dashboards.
- Apply formatting and themes.

Day 6 | Practice Questions

1. Create a bar chart representing product sales.
2. How can you add a slicer to filter data in a report?
3. Customize the color scheme of a report.



Stage 5:

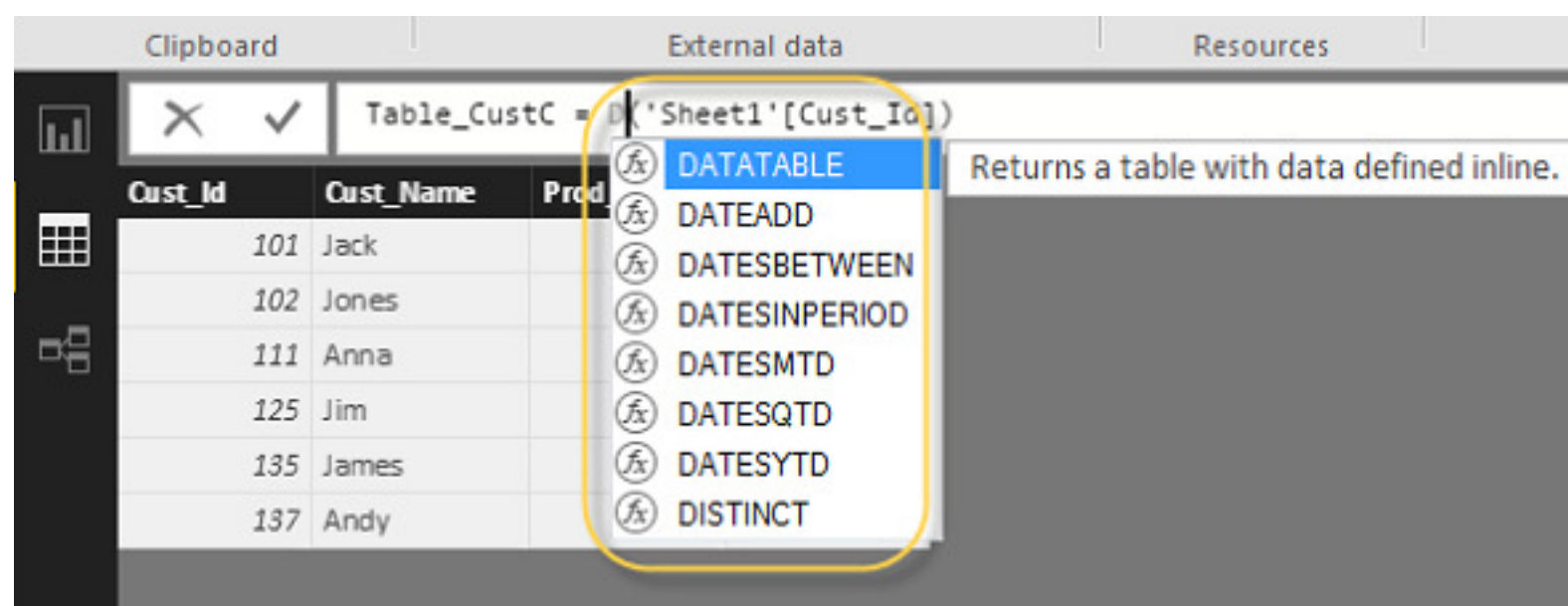
Advanced Topics

Day 9 | Advanced Topics

- Learn about advanced DAX functions.
- Implement time intelligence calculations.
- Understand custom visuals and Power BI Service features.

Day 10 | Practice Questions

1. Write a DAX expression for year-over-year growth.
2. Create a custom measure for moving averages.
3. Publish a report to Power BI Service and share it with a colleague.



Stage 6:

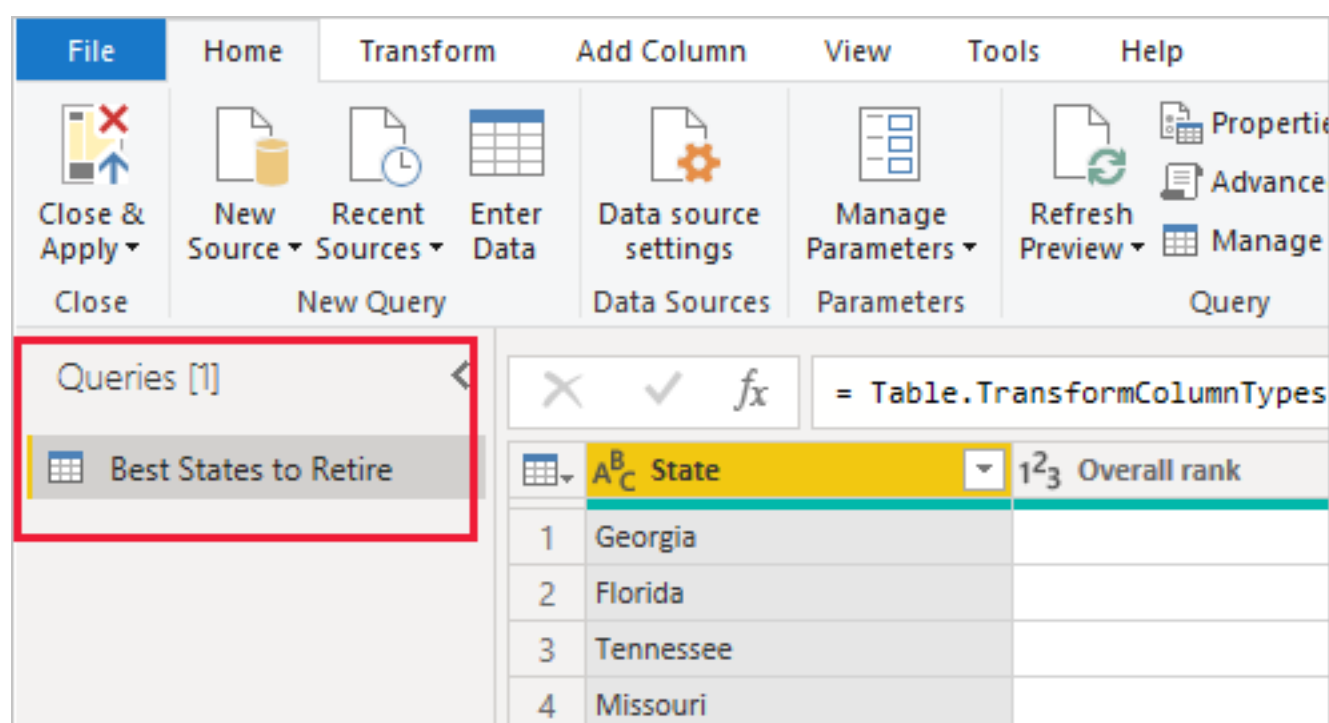
Data Transformation

Day 11 | Data Transformation and ETL

- Deep dive into Power Query.
- Master ETL (Extract, Transform, Load) techniques.
- Automate data refresh.

Day 10 | Practice Questions

1. Perform advanced data transformations using Power Query.
2. Schedule data refresh for a Power BI report.
3. Troubleshoot data refresh issues.



Queries [1]	
Best States to Retire	

= Table.TransformColumnTypes	
State	Overall rank
1 Georgia	
2 Florida	
3 Tennessee	
4 Missouri	



Stage 7:

Real-World Projects

Day 13 | Real-World Projects

- Work on real datasets and projects.
- Apply all the skills you've learned.
- Explore Power BI's integration with other tools (e.g., Excel, SharePoint).

Day 14 | Practice Questions

1. Choose a dataset and create a complete Power BI report from scratch.
2. Share your project with peers or mentors for feedback.



Stage 8:

Recap

Day 15 | Recap and Final Practice

- Review key concepts and techniques.
- Practice additional exercises.
- Set personal goals for further learning.

Day 15 | Practice Questions




1. Self-assessment: Take a quiz covering essential Power BI topics.
2. Identify areas for improvement and plan your next steps in mastering Power BI.

Remember that mastering Power BI is an ongoing journey, and continuous practice and real-world application of your skills will lead to expertise over time. This 15-day roadmap is just the beginning, and you can expand your knowledge by working on diverse projects and exploring advanced features as you progress.





WHY BOSSCODER?

-  **1000+** Alumni placed at Top Product-based companies.
-  More than **136% hike** for every **2 out of 3** working professional.
-  Average package of **24LPA.**

[EXPLORE MORE](#)